

YONDR POLICY & GUIDELINES

Phones are not to be used during school. Every student is assigned a personal Yondr Pouch. While the Yondr Pouch is considered school property, it is each student's responsibility to bring their Pouch with them to school every day and keep it in good working condition.

DAILY PROCESS

As students **Arrive to School**, they will:

- 1) Turn their phone off.
- 2) Place their phone inside their Pouch and secure it in front of school staff.
- 3) Store their Pouch in their backpack for the day.

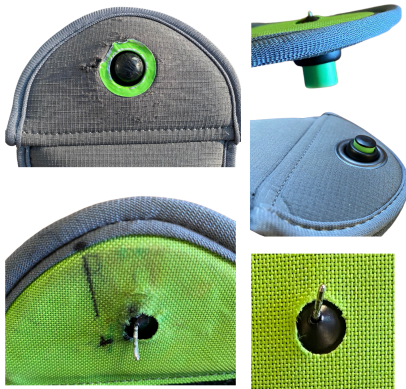
At the end of the day, students will open their Pouch, remove their phone and hand the pouch to our front desk staff.

VIOLATIONS

Pouch Damage / Lost Pouch / Using Phone During School

- If a student damages their Pouch or is caught on their phone, Administration will collect the phone/Pouch and call home for a
- **Parent Pickup AND/OR \$30 fee for a replacement pouch if damaged.**

Examples of damage:



- Deep scratches on the globe and on the green ring around it
- Intentional pen marks on the inside of the Pouch
- Bent pins
- Pin and button not fully recessing, due to pin damage

We received responses to our annual surveys from over 1,200 school partners, and after implementing the Yondr Education Program:

- **84% saw a change in student engagement**
- **72% saw a positive change in student behavior**
- **68% saw a positive change in academic performance**

Of our most recent impact survey of over 370 of our school partners:

- **86% saw a positive impact in student safety and wellness**